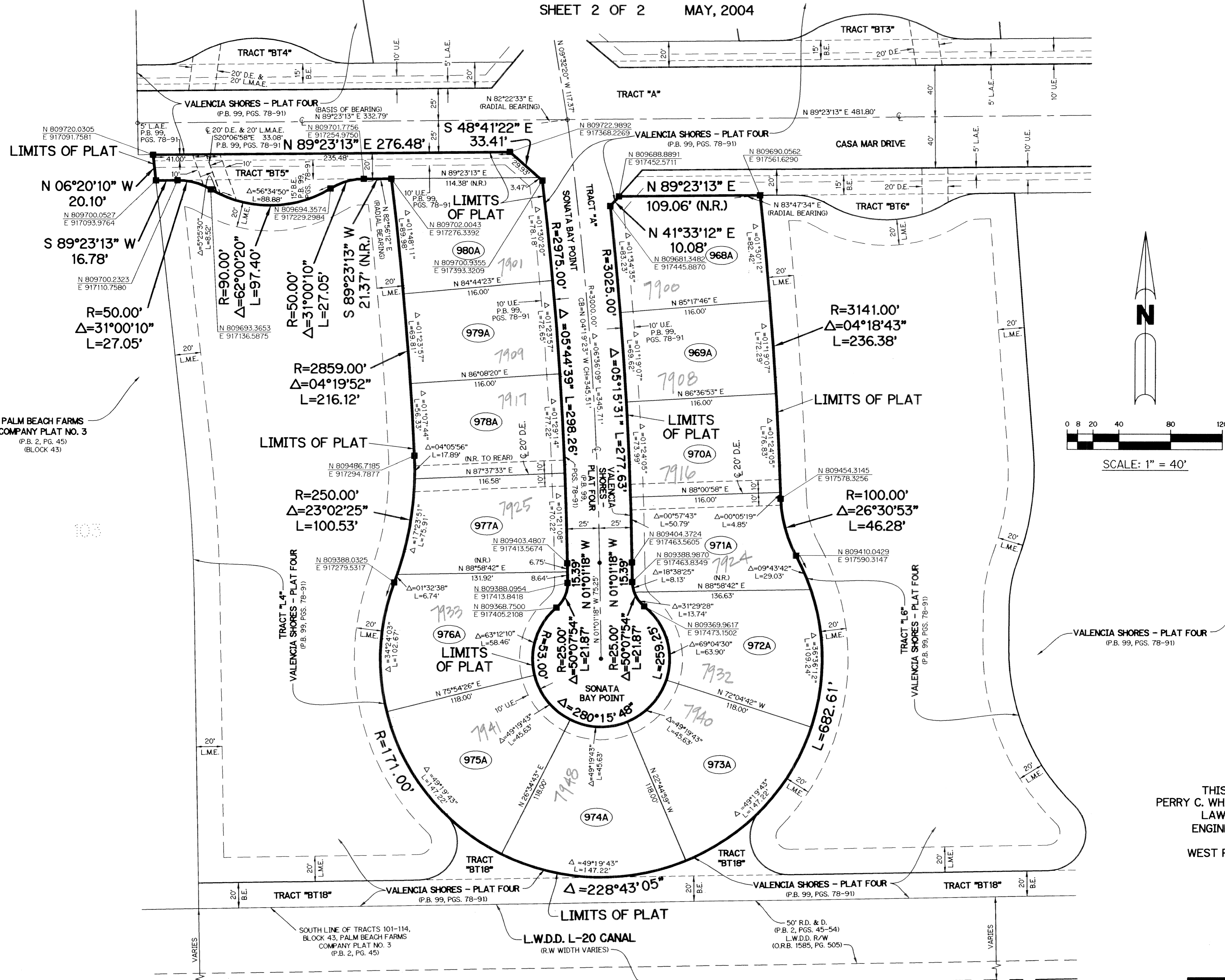


# VALENCIA SHORES - PLAT FOUR - REPLAT NO. 1

BEING A REPLAT OF ALL OF LOTS 968 THROUGH 985 AND ALL OF TRACT "BT5",  
 ACCORDING TO THE PLAT OF VALENCIA SHORES - PLAT FOUR, AS RECORDED IN PLAT  
 BOOK 99, PAGES 78 THROUGH 91, PUBLIC RECORDS OF PALM BEACH COUNTY,  
 FLORIDA, LYING IN SECTION 7, TOWNSHIP 45 SOUTH, RANGE 42 EAST,  
 PALM BEACH COUNTY, FLORIDA

SHEET 2 OF 2 MAY, 2004



- LEGEND:**
- - SET PERMANENT REFERENCE MONUMENT, L.B. #6674
  - - FOUND PERMANENT REFERENCE MONUMENT, L.B. #6674
  - - SET PERMANENT CONTROL POINT, L.B. #6674
  - - FOUND PERMANENT CONTROL POINT, L.B. #6674
  - △ - DELTA ANGLE
  - B.E. - BUFFER EASEMENT
  - CB - CHORD BEARING
  - CH - CHORD DISTANCE
  - E - CENTERLINE
  - D.B. - DEED BOOK
  - D.E. - DRAINAGE EASEMENT
  - GND. - GROUND
  - L - ARC LENGTH
  - L.A.E. - LIMITED ACCESS EASEMENT
  - L.M.A.E. - LAKE MAINTENANCE ACCESS EASEMENT
  - L.M.E. - LAKE MAINTENANCE EASEMENT
  - L.W.D.D. - LAKE WORTH DRAINAGE DISTRICT
  - N.R. - NOT RADIAL
  - N.T.S. - NOT TO SCALE
  - O.E. - OVERHANG EASEMENT
  - O.R.B. - OFFICIAL RECORD BOOK
  - P.B. - PLAT BOOK
  - P.B.C.U.E. - PALM BEACH COUNTY UTILITY EASEMENT
  - P.C. - POINT OF CURVATURE
  - P.C.P. - PERMANENT CONTROL POINT
  - PGS. - PAGES
  - P.O.B. - POINT OF BEGINNING
  - P.O.C. - POINT OF COMMENCEMENT
  - P.S.M. - PROFESSIONAL SURVEYOR AND MAPPER
  - P.T. - POINT OF TANGENCY
  - R - RADIUS
  - RAD. - RADIAL
  - R.D. & D. - ROAD, DITCH & DYKE RESERVATION PER P.B. 2, PG. 45 -54
  - R/W - RIGHT-OF-WAY
  - S.T. - SURVEY TIE
  - TYP. - TYPICAL
  - U.E. - UTILITY EASEMENT
  - N 737648.0171 E 905258.2326 - DENOTES STATE PLANE COORDINATES

**NOTE:**  
 COORDINATES SHOWN ARE GRID COORDINATES  
 DATUM = NAD 83 (1990 ADJUSTMENT)  
 ZONE = FLORIDA EAST ZONE  
 LINEAR UNIT = U.S. SURVEY FEET  
 COORDINATE SYSTEM = 1983 STATE PLANE  
 TRANSVERSE MERCATOR PROJECTION  
 ALL DISTANCES ARE GROUND  
 SCALE FACTOR = 1.0000217  
 PLAT BEARING = GRID BEARING  
 NO ROTATION

THIS INSTRUMENT PREPARED BY  
 PERRY C. WHITE, P.S.M. 4213, STATE OF FLORIDA  
 LAWSON, NOBLE AND WEBB, INC.  
 ENGINEERS PLANNERS SURVEYORS  
 420 COLUMBIA DRIVE  
 WEST PALM BEACH, FLORIDA 33409  
 LB-6674

SUBDIVISION: VALENCIA SHORES - PLAT 4 - REPLAT NO. 1  
 BOOK 172, PAGE 164  
 FLOOD MAP # 195 A  
 ZONING FUD  
 QUAD # 44  
 SE  
 TAZ 742  
 FUD NAME VALENCIA SHORES